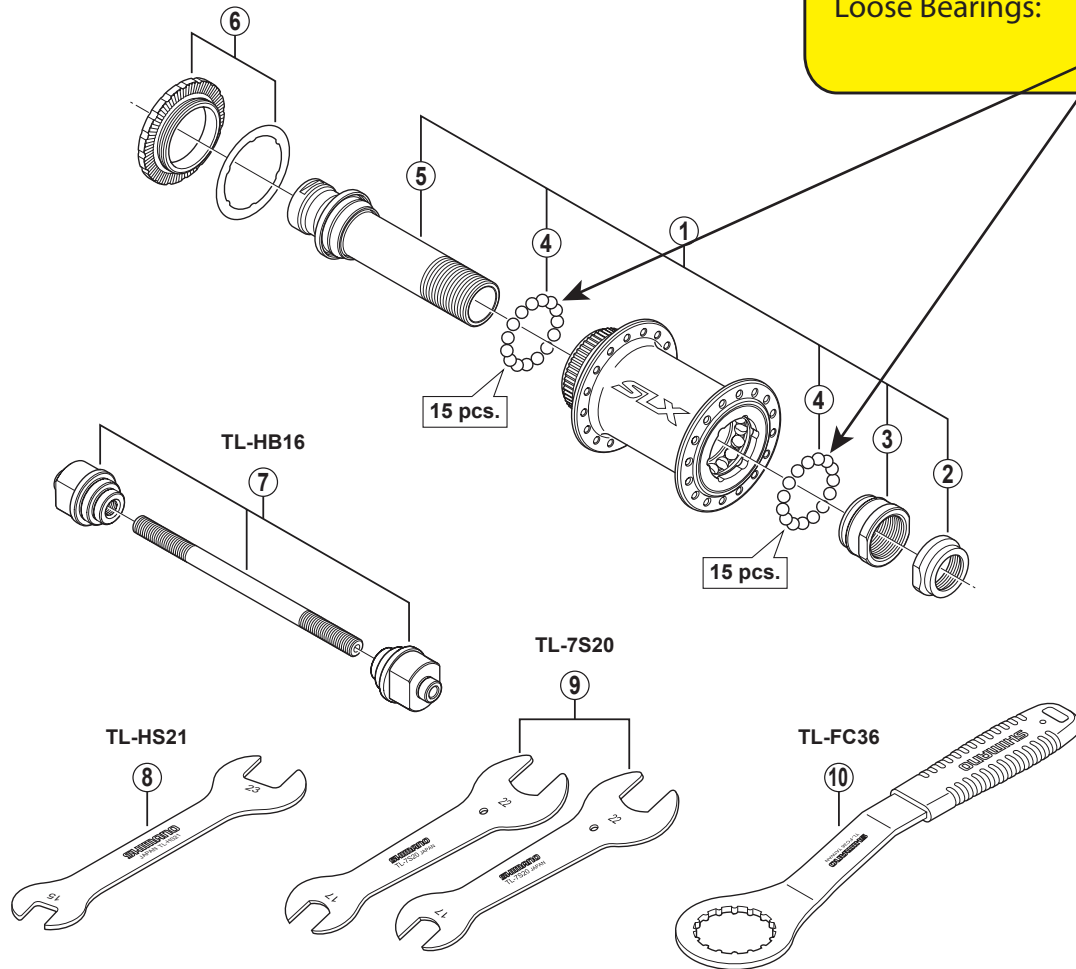


SHIMANO SLX Front Hub HB-M678 For Disc Brake

Wheels Mfg Part #:

Click on part # to order from wheelsmfg.com

Loose Bearings: [BALL-316-25](#)



WHEELS MANUFACTURING INC.

• Over Lock Nut Dimension: 100 mm (3-15/16")

ITEM NO.	Wheels Mfg Part #	SHIMANO CODE NO.	DESCRIPTION	INTERCHANGEABILITY
1		Y2UK98010	Complete Hub Axle	
2		Y2UC09000	Lock Nut (M19)	B
3		Y2UK06000	Right Hand Cone (M19)	
4	BALL-316-25	Y25U98020	Steel Ball (3/16") 36 pcs.	
5		Y2UK98020	Hub Axle 96 mm	
6		Y26L98030	Lock Ring & Washer	A
7		Y20W98020	TL-HB16 Hub Setting Tool	A
8		Y3C228000	TL-HS21 Hub Spanner (15 mm x 23 mm)	A
9		Y13098900	TL-7S20 Hub Spanner (17 mm x 22 mm) 2 pcs.	A
10		Y13098000	TL-FC36 for Lock Ring Removal Tool	A

A: Same parts.

B: Parts are usable, but differ in materials, appearance, finish, size, etc.

Absence of mark indicates non-interchangeability.

HB-M788

Mar.-2012-3405

© Shimano Inc. I

Specifications are subject to change without notice.

SHIMANO