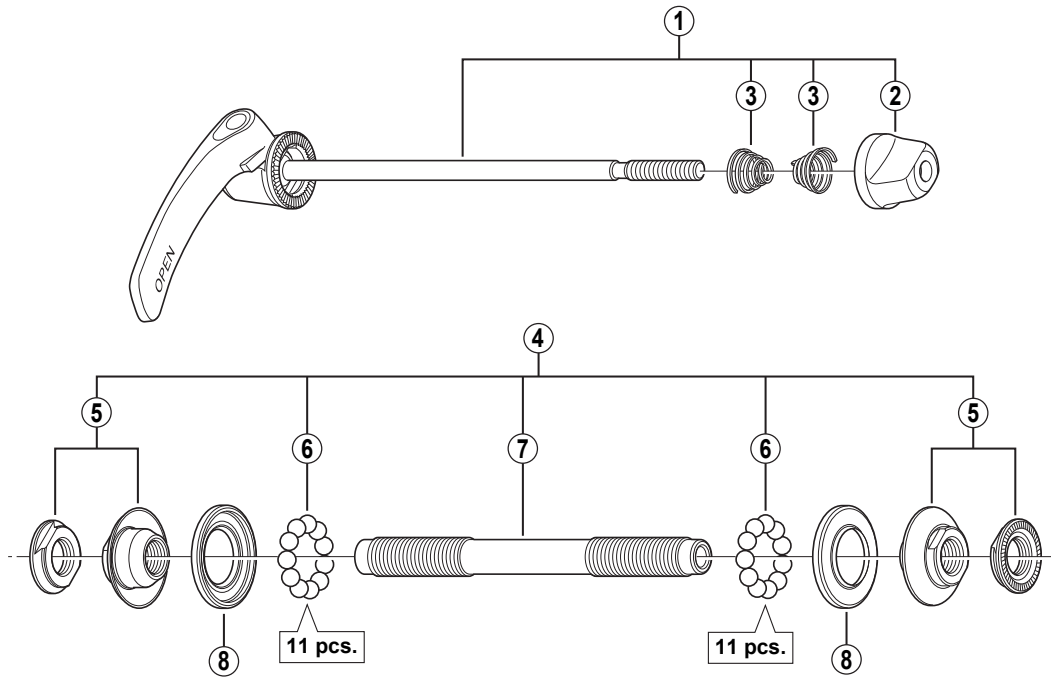
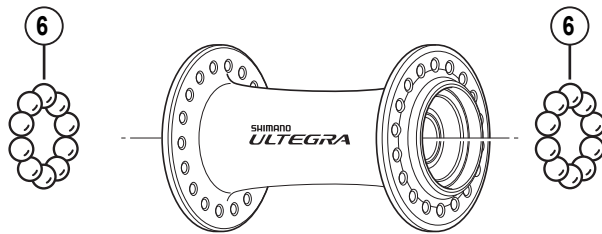


# ULTEGRA Front Hub HB-6700



**Wheels Mfg Part #:**  
Click on part # to order from [wheelsmfg.com](http://wheelsmfg.com)

**Loose Bearings:** [BALL-316-25](#)



WHEELS MANUFACTURING INC.

• **Over Lock Nut Dimension: 100 mm (3-15/16")**

ITEM NO.	Wheels Mfg Part #	SHIMANO CODE NO.	DESCRIPTION	INTERCHANGEABILITY		
				HB-7900	HB-6600	HB-5600
1		<b>Y-27S 98010</b>	Complete Quick Release 133 mm (5-1/4")	B	B	B
2		<b>Y-23W91100</b>	Quick Release Nut	A	A	
3		<b>Y-231 11000</b>	Volute Spring	A	A	
4		<b>Y-27S 98020</b>	Complete Hub Axle 108 mm (4-1/4")			
5		<b>Y-27S 98030</b>	Lock Nut Unit			
6	<b>BALL-316-25</b>	<b>Y-4BB98030</b>	Steel Ball (3/16") 22 pcs.	A	A	
7		<b>Y-21S 02000</b>	Hub Axle M10 x 108 mm (4-1/4")			
8		<b>Y-2TA 06000</b>	Seal Ring			

A: Same parts.  
B: Parts are usable, but differ in materials, appearance, finish, size, etc.  
Absence of mark indicates non-interchangeability.

0902-2914

Specifications are subject to change without notice.

