

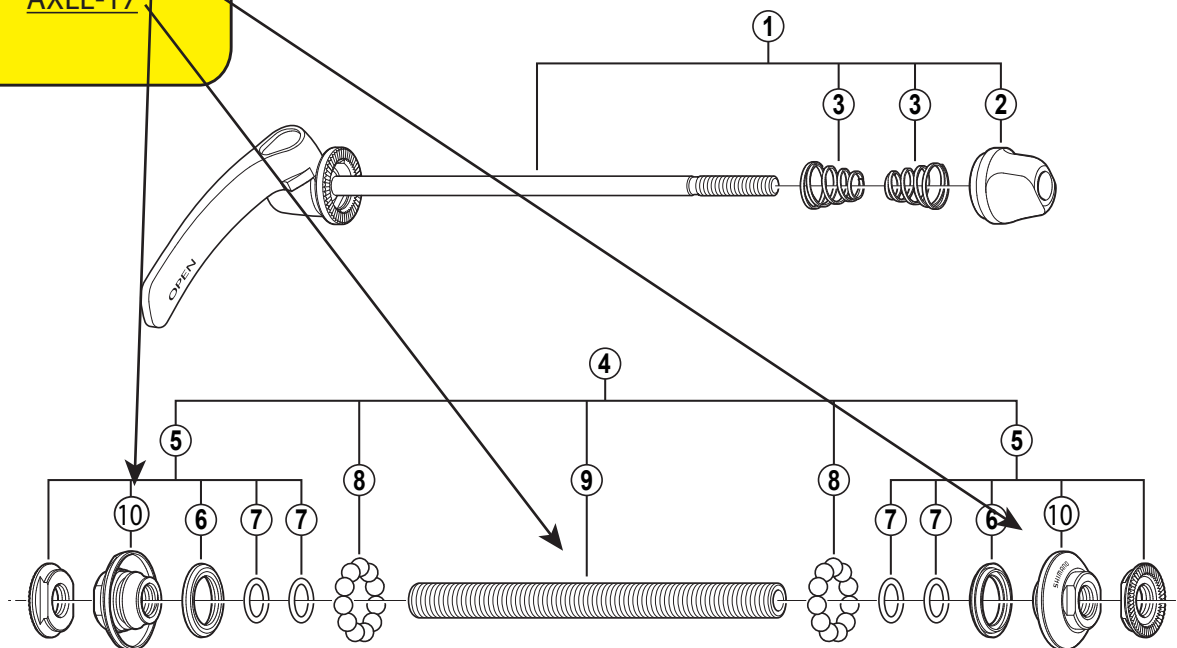
SHIMANO 105 Front Hub

HB-5600 Silver Version

HB-5600-L Black Version

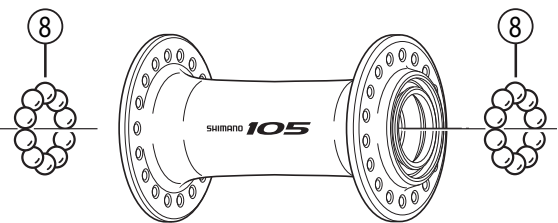
Wheels Mfg Part #:
 Click on part # to order from wheelsmfg.com

Cones: [CN-R096](#)
 Axle: [AXLE-17](#)



Wheels Mfg Part #:
 Click on part # to order from wheelsmfg.com

Loose Bearings: [BALL-316-25](#)



WHEELS MANUFACTURING INC.

• Over Lock Nut Dimension: 100 mm (3-15/16")

ITEM NO.	Wheels Mfg Part #	SHIMANO CODE NO.	DESCRIPTION	INTERCHANGEABILITY
* 1		Y-26B 98010	Complete Quick Release 133 mm (5-1/4") / Silver for HB-5600	B
		Y-26S 98010	Complete Quick Release 133 mm (5-1/4") / Black for HB-5600-L	B
2		Y-23W91100	Quick Release Nut	A
3		Y-231 11000	Volute Spring	A
4		Y-26B 98020	Complete Hub Axle 108 mm (4-1/4")	B
5		Y-26B 98030	Lock Nut Unit	B
6		Y-214 06000	Seal Ring	A
7		Y-26A 05000	O-Ring	A
8	BALL-316-25	Y-4BB98030	Steel Ball (3/16") 22 pcs.	A
9	AXLE-17	Y-21C 03100	Hub Axle 108 mm (4-1/4")	A
10	CN-R096	23W 9802	Cone (M9 x 12.8 mm) w/Dust Cover & Seal Ring	

HB-5600

A: Same parts.
 B: Parts are usable, but differ in materials, appearance, finish, size, etc.
 Absence of mark indicates non-interchangeability.

0802-2457A

Specifications are subject to change without notice.

