

SHIMANO 105 Freehub

FH-5700 -S Silver Version

FH-5700 -L Black Version

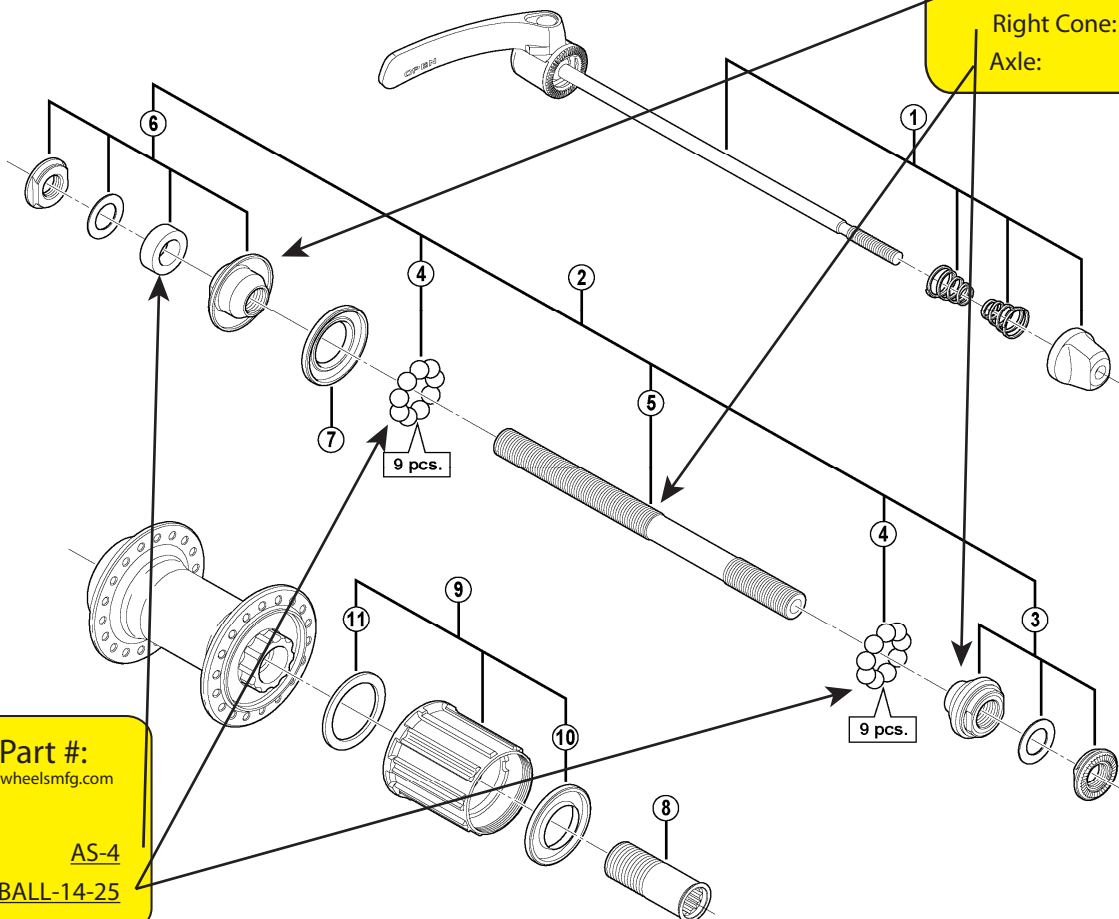
Wheels Mfg Part #:

Click on part # to order from wheelsmfg.com

Left Cone: [CN-R002](#)

Right Cone: [CN-R024](#)

Axle: [AXLE-03](#)



Wheels Mfg Part #:

Click on part # to order from wheelsmfg.com

Axle Spacer: [AS-4](#)

Loose Bearings: [BALL-14-25](#)



WHEELS MANUFACTURING INC.

FH-5600

FH-4500

ITEM NO.	Wheels Mfg Part #	SHIMANO CODE NO.	DESCRIPTION	INTERCHANGEABILITY	
1		Y3TA98010	Complete Quick Release 163 mm (6-13/32") for FH-5700-S	B	
		Y3TA98020	Complete Quick Release 163 mm (6-13/32") for FH-5700-L	B	
2		Y3TA98030	Complete Hub Axle 141 mm (5-9/16")		
3		Y3TA98040	Right Hand Lock Nut Unit		
4	BALL-14-25	Y00091310	Steel Ball (1/4") 18 pcs.	A	A
5	AXLE-03	Y30K01100	Hub Axle 141 mm (5-9/16")	A	A
6		Y3TA98050	Left Hand Lock Nut Unit		
7		Y3CR09000	Left Hand Seal Ring		A
8		Y3BL03000	Body Fixing Bolt		A
9		Y3TA98060	Complete Freewheel Body		
10		Y3CR08000	Right Hand Seal Ring		A
11		Y37504000	Freewheel Body Washer	A	A
	CN-R002		Left Hand Cone (M10 x 15mm)		
	CN-R024		Right Hand Cone (M10 x 15mm)		
	AS-4		Left Hand Axle Spacer, 4mm		

A: Same parts.

B: Parts are usable, but differ in materials, appearance, finish, size, etc.

Absence of mark indicates non-interchangeability.

Feb.-2010-3006

© Shimano Inc. A

Specifications are subject to change without notice.

SHIMANO