

# SHIMANO TIAGRA Freehub FH-4400 9-Speed



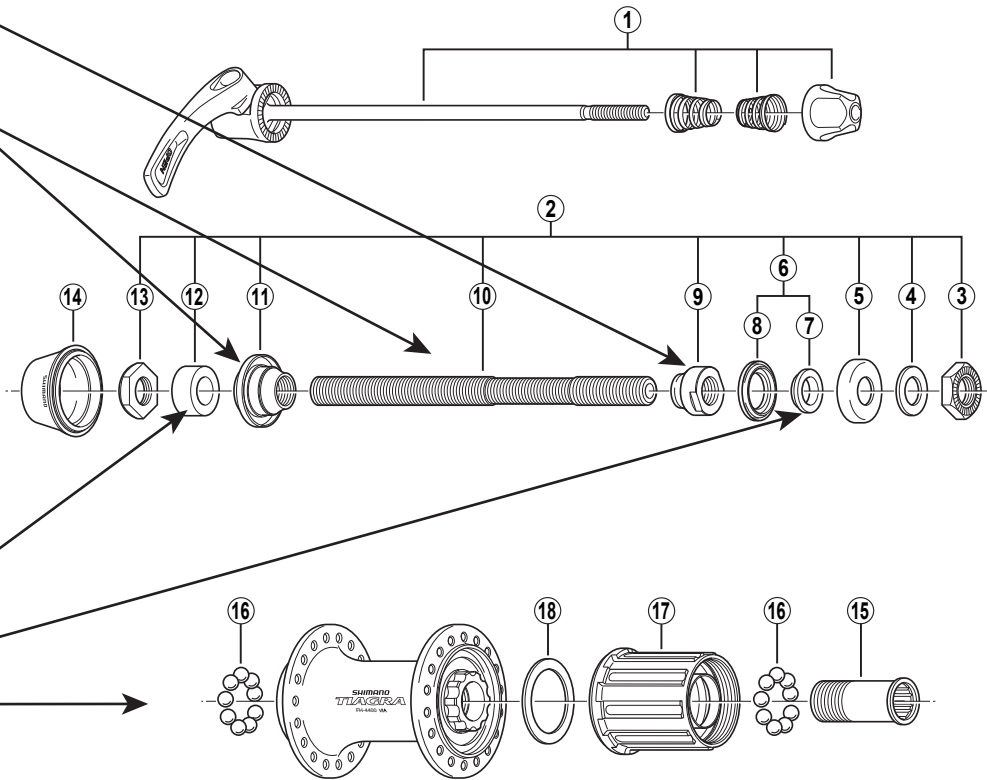
## Wheels Mfg Part #:

Click on part # to order from wheelsmfg.com

Right Cone: [CN-R108](#)

Left Cone: [CN-R063](#)

Axle: [AXLE-03](#)



## Wheels Mfg Part #:

Click on part # to order from wheelsmfg.com

Axle Spacer: [AS-3 + AS-5](#)

Axle Spacer: [AS-0.5R + AS-3](#)

Loose Bearings: [BALL-14-25](#)

- Over Lock Nut Dimension: 130 mm (5-1/8")
- Use with CS-HG50-9.

FH-5500  
FH-3300  
FH-A416

ITEM NO.	Wheels Mfg Part #	SHIMANO CODE NO.	DESCRIPTION	INTERCHANGEABILITY
1		Y-3AV 90130	Complete Quick Release 163 mm (6-13/32")	B A A
2		Y-3BH 98010	Complete Hub Axle 141 mm (5-9/16")	B B
3		Y-220 05011	Right Hand Serated Lock Nut 4.5 mm	A
4		Y-301 08100	Right Hand Washer 1.2 mm	A A
5		Y-3A0 05100	Right Hand Dust Cap	A A A
6		Y-32X 98020	Right Hand Axle Spacer & Seal Ring	A A A
7	<a href="#">AS-0.5R + AS-3</a>	Y-31V 03000	Right Hand Axle Spacer 3.7 mm	A A A
8		Y-214 06000	Right Hand Seal Ring	A A A
9	<a href="#">CN-R108</a>	Y-3BH 02000	Right Hand Cone (M10 x 12.7 mm)	A
10	<a href="#">AXLE-03</a>	Y-30K 01100	Hub Axle 141 mm (5-9/16")	B A
11	<a href="#">CN-R063</a>	Y-3AE 98030	Left Hand Cone (M10 x 16 mm) w/Dust Cover	
12	<a href="#">AS-3 + AS-5</a>	Y-220 04110	Left Hand Axle Spacer 8 mm	
13		Y-220 05031	Left Hand Serated Lock Nut 4 mm	
14		Y-3AC 04000	Rubber Seal	
15		Y-359 04000	Body Fixing Bolt	A A A
16	<a href="#">BALL-14-25</a>	Y-000 91310	Steel Ball (1/4") 18 pcs.	A A A
17		Y-32X 98040	Complete Freewheel Body w/Right Hand Dust Cap	A A A
18		Y-375 04000	Freewheel Body Washer	A A A

The table indicates the adaptability of conventional parts to FH-4400.

A : Same parts.

B : Parts are usable, but differ in materials, appearance, finish, size, etc.

Absence of mark indicates non-interchangeability.

9906-1861

Specifications are subject to change without notice.

# SHIMANO