

# SORA Freehub FH-3500 8/9/10-Speed

**Wheels Mfg Part #:**  
Click on part # to order from wheelsmfg.com

Right Cone: [CN-R063](#)

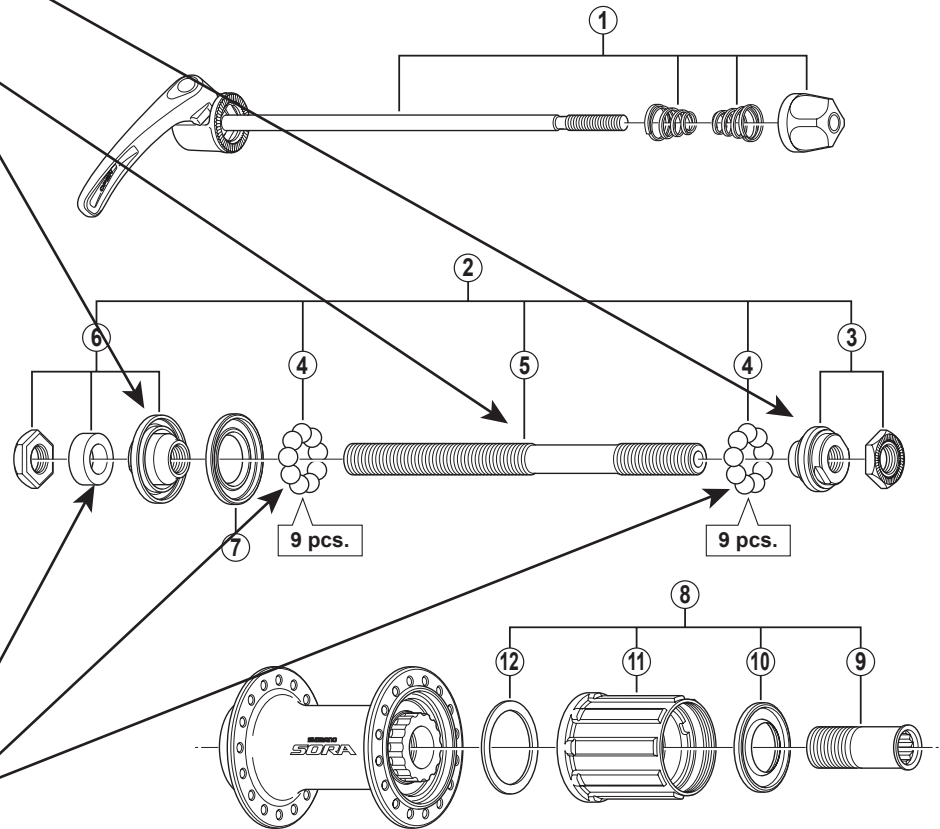
Left Cone: [CN-R063](#)

Axle: [AXLE-03](#)

**Wheels Mfg Part #:**  
Click on part # to order from wheelsmfg.com

Axle Spacer: [AS-5](#)

Loose Bearings: [BALL-14-25](#)



WHEELS MANUFACTURING INC.

• Over Lock Nut Dimension: 130 mm (5-1/8")

ITEM NO.	Wheels Mfg Part #	SHIMANO CODE NO.	DESCRIPTION	INTERCHANGEABILITY
1		Y4EJ98030	Complete Quick Release 163 mm (6-13/32")	B
2		Y3E098010	Complete Hub Axle 141 mm (5-9/16")	
3		Y3E098020	Right Hand Lock Nut Unit	
4	<a href="#">BALL-14-25</a>	Y00091310	Steel Ball (1/4") 18 pcs.	A A
5	<a href="#">AXLE-03</a>	Y30K01100	Hub Axle M10 x 141 mm (5-9/16")	A A
6		Y3E098030	Left Hand Lock Nut Unit	
7		Y3CR09000	Left Hand Seal Ring	A
8		Y3E098050	Complete Freewheel Body	A
9		Y3BL03000	Body Fixing Bolt	A A
10		Y3CR08000	Right Hand Seal Ring	A
11		Y3E098060	Freewheel Body Unit	A
12		Y3TD06000	Freewheel Body Washer	A
	<a href="#">AS-5</a>		Left Hand Axle Spacer, 5mm	

FH-4600  
FH-RM66

A: Same parts.  
B: Parts are usable, but differ in materials, appearance, finish, size, etc.  
Absence of mark indicates non-interchangeability.

Mar.-2012-3417  
© Shimano Inc. I

Specifications are subject to change without notice.

**SHIMANO**